



### Wish List

- Socks and underwear
- Sweats
- Pajamas
- Diapers—sizes 4 & 5
- Silverware
- Pots and pans
- Drinking glasses
- Dishware
- Pizza pans
- Dish cloths/towels
- Clippers/Tweezers
- Diaper wipes
- Laundry soap
- Cleaning supplies
- Backpacks

## Upcoming Events — Save the Dates!

### WeFest Bucket Drive August 1st

LCRC will hold its 6th Annual Bucket Drive at WeFest on August 1st.

We need volunteers to help us raise funds by committing to a 3 hour shift. Incentives will be provided to our volunteers. Preferred age for volunteers is 18.

If you would like to volunteer, please call us at 847-8572.

Please come out and join us and we will have some heel stomping fun and a country good time!



PO Box 394  
Detroit Lakes, MN 56502

218.847.8572  
lcrctl@lakescrisis.com  
www.lakescrisis.com

2ndQuarter  
2013

# The Advocate

## Mary's Place (Two Years Later)

August 11, 2011 Mary Newman was joined by her family and the staff and volunteers from the Lakes Crisis and Resource Center to officially open Mary's Place, the new shelter that honors her philanthropy. It was a chance for supporters to see the facility that would house up to 27 women and children before it became a secure location, closed to the general public in order to ensure safety for victims of domestic violence.

Two years later, executive director, Jan Logan reflects on their life saving work. Logan grew up in the Moorhead area and vacationed near Detroit Lakes. After moving to the Twin Cities for over 30 years, she returned to this area and put her retirement on hold when she saw the need in the community. She says, "It's a world I didn't even know existed!"

About 85% of the time, Mary's Place is filled to capacity. Logan says, "Ninety percent of the residents have significant challenges — lacking the basic necessities and impacted by the overwhelming affects of abuse and trauma. When they come to Lakes Crisis and Resource Center and Mary's Place they have typically used up every option in their support system. They are in crisis, many times in danger and with only the clothes on their backs."

While the last two years have been rewarding and challenging at the same time, the biggest surprise to Logan has been the lack of affordable housing in the Detroit Lakes area. Her clients want to start new lives. Many of the residents have children, and in an effort to help these women become self sufficient, the staff at LCRC provide educational classes, connections to resources in the community to assist them in job training, housing opportunities, schools, medical care, etc. In an effort to live independently, these families often need everything to furnish a new home including furniture, linens, pots and pans, dishes, lamps as well as basic cleaning and household necessities. Logan said, "It has been wonderful to work with this community to help women and children start over with the abundant kindness and generosity of donations to assist these families." With that said, however, Logan is pleased that 75% of the women sheltered at Mary's Place do not go back to their abuser. That's a high percentage compared to the national average, so she and her staff are thankful for that fact. Without the support of the community and staff at LCRC, many of these women feel they do not have any other option but to return to their abuser.

**Ribbon Cutting Ceremony  
July 2011**



## this issue

### Page 1

Mary's Place  
(Two Years Later)

### Page 2

Mary's Place

### Page 3

Building  
Board of Directors  
We Care Receipts  
Find us on Facebook  
Donate Online

### Page 4

Wish List  
Upcoming Events

The Advocate 2nd Quarter 2013



## Mary's Place (Two Years Later)

### *Why have LCRC & Mary's Place met with success over the past two years?*

Logan said the staff work with their clients on a number of levels offering numerous options including basic information regarding domestic violence and its impact on children and families along with an in-house mental health program for adults and children. In addition, staff work with clients on their self identified needs around safety, health, finances, housing, parenting and children. Many don't know any other lifestyle because they grew up in an abusive environment and witnessed domestic violence in their own homes. The extent of services they need is surprising, she emphasized. "Many times they need everything! They need parenting skills, emotional support and a chance to complete their education."

### *Do you see a light at the end of the tunnel for them?*

Logan said, "If you don't get to the root cause of the problem, it won't change. That's why supportive services are so imperative to allow these individuals to evaluate their lives in a safe, nurturing and healthy environment."

Logan said "Because there is a lack of affordable housing in Detroit Lakes and because victims of domestic violence can't turn their lives around in an instant, more affordable housing options are needed." Logan would like to see transitional housing built next to Mary's Place and the LCRC offices. Residents of those apartments could then continue to receive follow up support with familiar staff who know their history. Being able to attend support groups next door, receive ongoing education regarding life skills, parenting, and healthy relationships would enhance their chances for a successful life. She estimates the cost of 8-12 transitional housing units and the staff to run it would total about \$2.5m.

"I need another angel!" she said, referring to the wings Mary Newman gave LCRC. Logan also hopes to receive a federal grant to add another child advocate who could work more in the schools, a program cut in the past due to lack of funding.

"Our society is so filled with troubled people," she said. It is a systematic issue that started long ago. When she sees kids without shoes to wear to school and no place to live, it makes her feel hopeless. Thankfully, there are residents keeping their appointments with LCRC psychologists, establishing themselves in a job and living independently with their children, that restores Logan's hope. She realizes the positive impact the shelter and staff are making because you can see it in many of the lives of the moms and children.

In recent months, LCRC notified the public that there are opportunities for volunteerism at the center such as providing childcare for a few hours at a time so the moms can work on their goals, organizing the donation room and light cleaning of the facility. The response has been encouraging, but the need for volunteers is ongoing. LCRC is working with Essentia Health St. Mary's to provide classes on various topics including nutrition, but volunteers are needed to teach the moms how to prepare healthy meals. If you're interested in sharing your time and talents, contact Jan Logan at (218) 847-8572.

*-Submitted by Kathy Coyle*



Mary's Place and offices for Lakes Crisis and Resource Center were dedicated in 2011.

Lead donor, Mary Newman, was joined by executive director, Jan Logan, LCRC board members and staff at the ribbon cutting.

## LCRC Board of Directors

**Gretchen Thilmony, President**

**Linda Mickelson, Vice President**

**Kim Bergquist, Secretary**

**Sandy Brasel, Treasurer**

**Kathy Carlson**

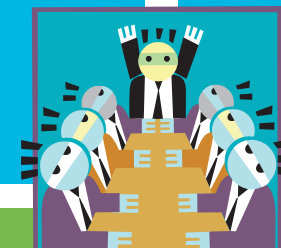
**Cathy Fritz**

**Beth Leighton**

**Sharon Sinclair**

**Wendy Spry**

**Jeff Staley**



## **"We Care" Receipts**

Lakes Crisis & Resource Center collects "We Care" receipts from various businesses in the community. Please consider stopping by one of the following locations to drop off your receipts:

- Action Realty
- Bremer Bank
- Curves
- LCRC

If your business would like to begin collecting receipts on behalf of LCRC, please contact us. Thank you for your support!

## **facebook**

Find Lakes Crisis & Resource Center on facebook and "like" us.



## **Donate online**

